



Manufacturing Solutions

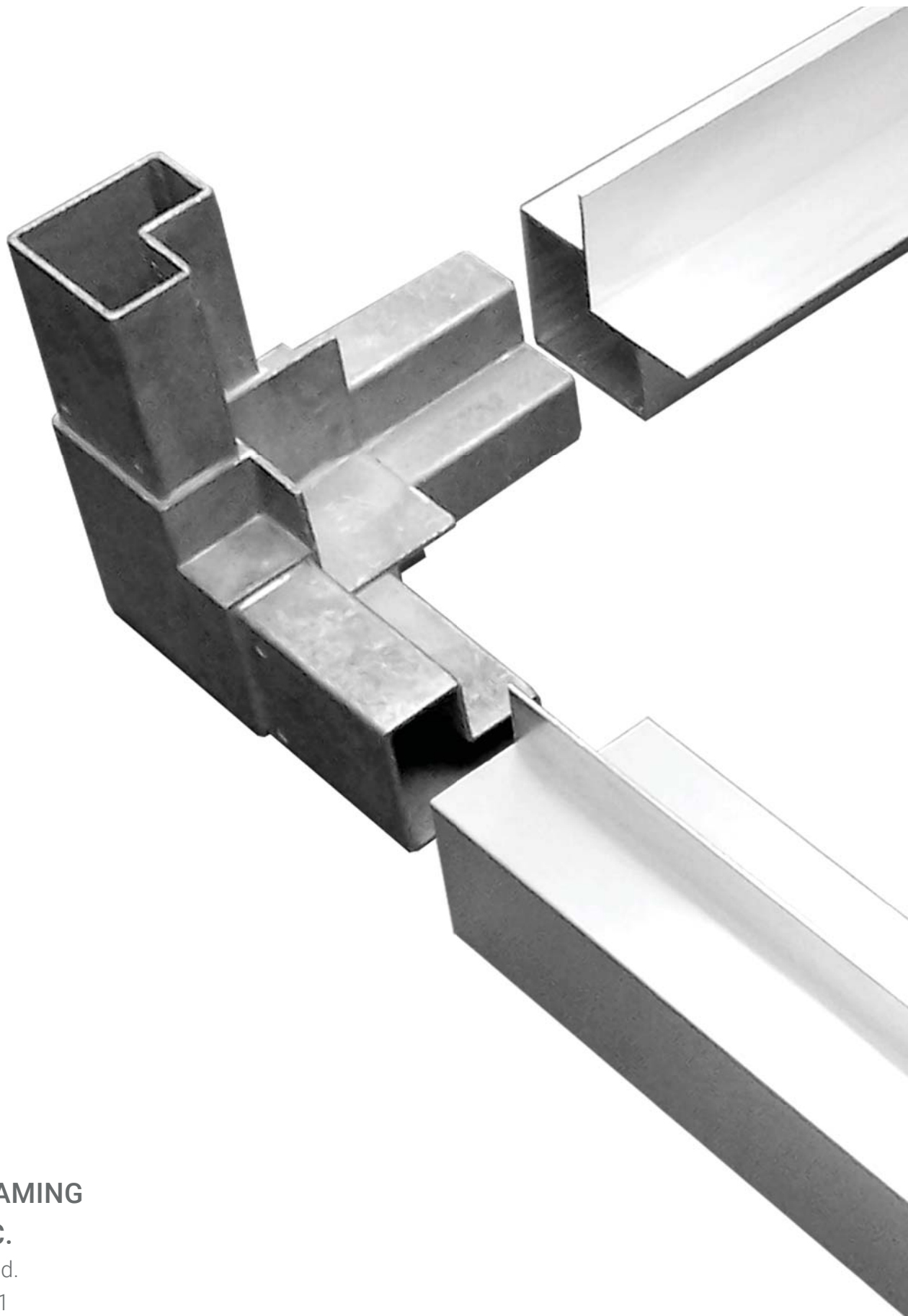
Fast. Easy. Accurate.

General Brochure



MODULAR FRAMING SYSTEMS, INC.

4525 Brittmoore Road, Houston, TX 77041 | T: 713.538.2050 | F: 713.538.2054



**MODULAR FRAMING
SYSTEMS, INC.**

4525 Brittmoore Rd.


Houston, TX 77041

T: 713-538-2050

www.modularframing.com



Products

- 8 STANDARD SYSTEMS
 - 9 BLUNTED SYSTEMS
 - 10 THERMAL BREAK SYSTEMS
 - 11 STOPPER SYSTEMS
 - 12 ALUMINUM AND NYLON HANDLES
 - 13 ALUMINUM AND NYLON HINGES
 - 14 BASE FRAME, FAN/MOTOR RAIL
 - 15 ADDITIONAL COMPONENTS
 - 16 PROJECTS UNDER CONSTRUCTION
 - 17 COMPLETED PROJECTS
 - 18 AIR CONTROL PRODUCTS
- 

**INCREASE QUALITY AND
CREATE OPPORTUNITY
THROUGH FAST, EASY,
ACCURATE ASSEMBLY.**

“We would not have been able to build these units with our old method of construction. Your frame made this possible.”

— James

“Your framing system has allowed us to reduce our lead time and costs to win ongoing projects.”

— John



Benefits

REDUCE LABOR

REDUCE LEAD TIMES

ELIMINATE WELDING

INCREASE PRODUCT LIFE

SAVE MONEY

Company Overview

Standardizing the assembly method allows manufacturers to reduce labor, reduce lead times, enhance product offerings, and save money along the way.

Modular Framing Systems, Inc. has served as the sole distributor for its uniquely designed aluminum framing system throughout North America for over 20 years. What started as a system of die cast corners and their corresponding aluminum profiles has now grown into a complete and ever-expanding product offering of components and accessories for the manufacture of air handling units, fan coil units, computer room units, acoustical enclosures, soft wall clean spaces, base rail corners equipment housings, and much more.

Saving money is always at the top of our list of goals as business professionals, especially in today's economy. Our light-weight, long lasting aluminum framing system helps achieve this through a combination of benefits. The system is assembled with no welding required. The corners and perimeter profiles pressure fit together eliminating the cost and inconsistencies of welding.

The same method of assembly applies to any size frame. Profiles and Omega intermediate supports can be cut to size facilitating full dimensional flexibility matched with quick and accurate assembly. The concept with this system is to standardize the assembly method which allows manufacturers to reduce labor, reduce lead times, enhance product offerings, and save money along the way.

Historically our products have been used to compliment and improve upon the expertise set forth by our customers. No large capital outlay or complex tooling is necessary to manipulate our material. Our products allow customers to easily expand their product lines and provide a variety of retrofit and field installed units.



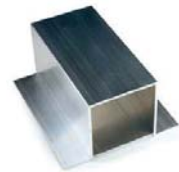


- 1. Corners
- 2. Profiles
- 3. Omegas
- 4. Omega Joints
- 5. Belt Stretchers
- 6. Motor Rails
- 7. Plate Nuts



- Dampers
- Handles
- Hinges
- Flexible Connections
- Louvers

Standard Systems



90 degree outside edge
Panel thickness range of 1/2" to 2"
6063 T5 aluminum extrusions
Die-cast aluminum and nylon hardware

Our **standard framing systems** include pressure die-cast aluminum alloy or fiberglass reinforced nylon joints that work in conjunction with precision designed complimentary extrusions to form 90 degree exterior angles for a clean, sharp look for every edge on your structure.

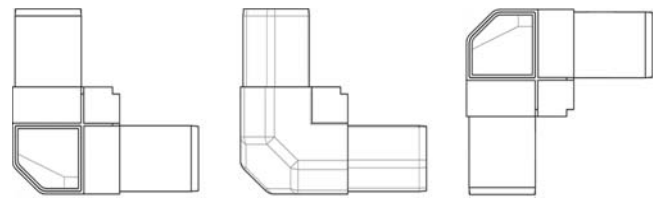


▶ Blunted Systems

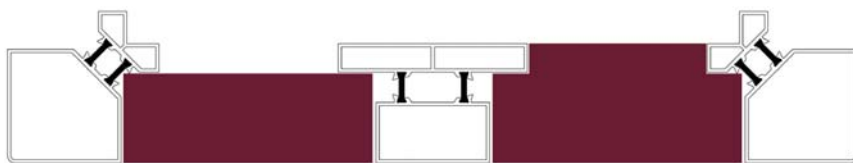


45 degree outside edge
Panel thickness range of 1" to 2"
6063 T5 aluminum extrusions
Die-cast aluminum hardware

Our **blunted corners** offer an aesthetic departure from the norm by taking our standard corner design and shaving the 90 degree exterior angles at 45 degrees. Function and assembly is exactly the same as the standard system.

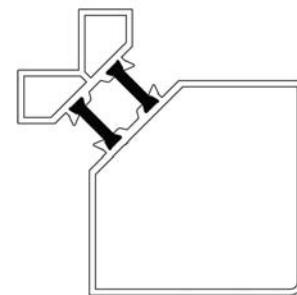
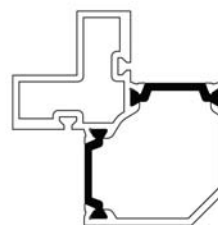


Thermal Break Systems

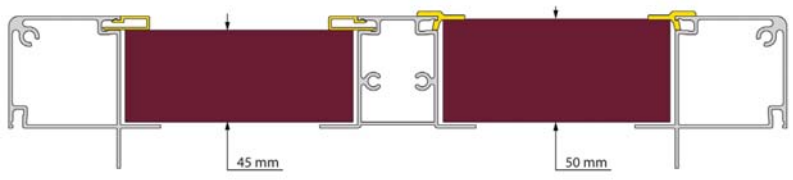


90 degree outside edge
Panel thickness range of 1" to 2.5"
6063 T5 aluminum extrusions
Fiberglass reinforced nylon hardware

Our **thermal break components** are designed to eliminate condensation on air handling units utilizing built-in thermal separation of interior and exterior extrusion surfaces. Each system features fiberglass reinforced nylon corners and multi-sectional perimeter and intermediate profiles.

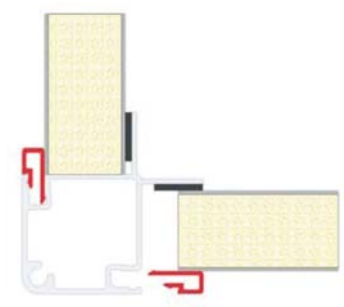


► Stopper Systems

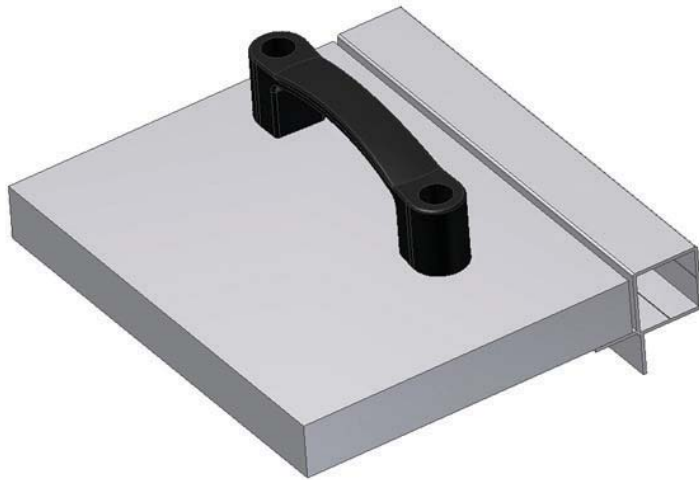


90 degree outside edge
 Panel thickness range of 1" to 2"
 6063 T5 aluminum extrusions
 Fiberglass reinforced nylon hardware

Stopper Systems eliminate the need for fasteners when installing panels. Simply place the panel against the frame flanges and secure it with the clip extrusions. Stopper Systems are available in both thermal break and non-thermal break designs. The nylon hardware and accessories can be used interchangeably for both designs.

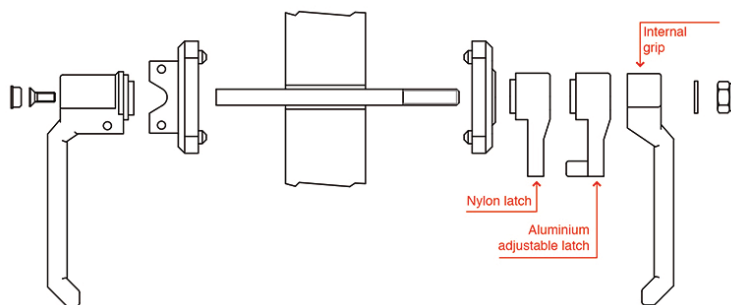


Aluminum and Nylon Handles

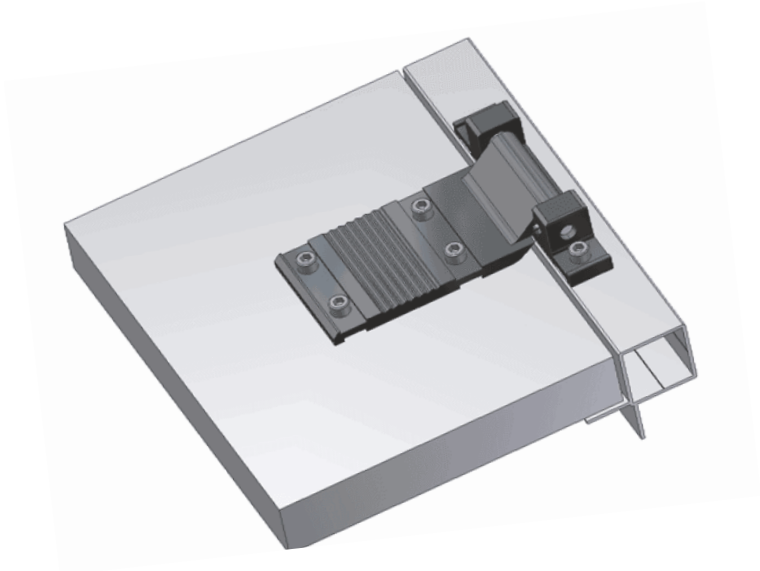


We offer a wide range of **aluminum and fiberglass reinforced nylon handles.**

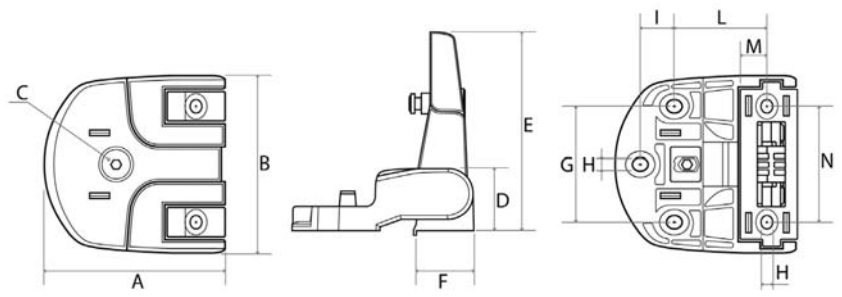
Designs include pull handle, exterior mount only, interior/exterior grip, key turn, and handle/hinge combination. Our handles are designed with no moving parts which eliminates the possibility of part linkage failure.



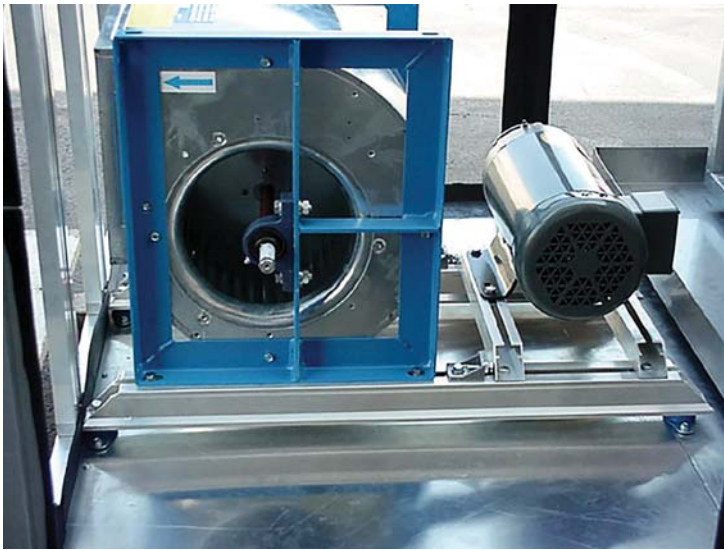
▶ Aluminum and Nylon Hinges



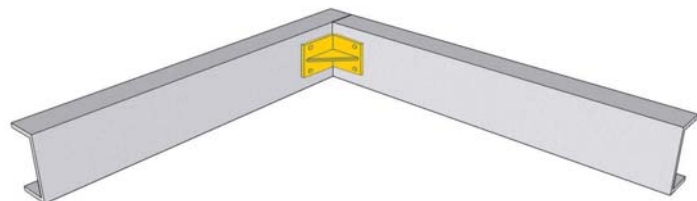
Complimenting our handles, a full line of **aluminum and fiberglass reinforced nylon hinges** are available. Designs include piano style, die-cast, extruded, and adjustable offset. Our high quality hinges are matched with simple installation to ensure complete customer satisfaction.



Base Frame Fan / Motor Rail



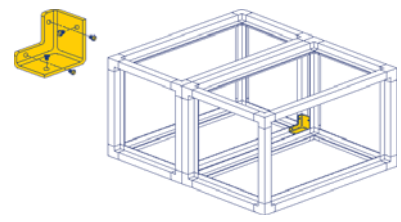
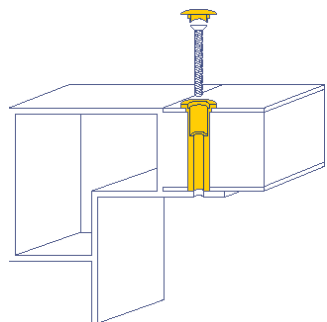
Assemble a **4" C-Channel base frame** quickly and accurately with no welding required using our extrusions and **base squaring brackets**. Use the industry's fastest and easiest method to create a two-way adjustable mounting base for virtually any size motor and/or fan with our **aluminum fan and motor rail components**.



► Additional Components



Additional items in our product line include panel retainers, view portals, module connectors and more. Contact our office or visit our website for product specific information and application assistance.



Projects Under Construction



▶ Completed Projects



Air Control Products

Durable, Sustainable Aluminum Design Made To Virtually Any Size And Configuration.



All of our **Air Control Products** are assembled using durable, sustainable aluminum extrusions and fiberglass reinforced nylon hardware. With their unique design, virtually any size and configuration of damper, louver, and flexible connection can be made to order with short lead times. To learn more, visit our website or contact us to request additional information.



AIR CONTROL DAMPERS

Our **Standard Opposed Blade Dampers** feature a 100mm / nominal 4" air foil blade, all aluminum construction, and a fiberglass reinforced nylon gearing system that is housed internally. Blade options include standard air foil, light design, and thermal break. **Class 2 AMCA Certified**



BACKDRAFT GRAVITY DAMPERS

Our **Backdraft Gravity Dampers** use the same perimeter frame and blade height design as our Standard Dampers which simplifies production planning and maintains the expectation of durability and high quality. **AMCA Certified**



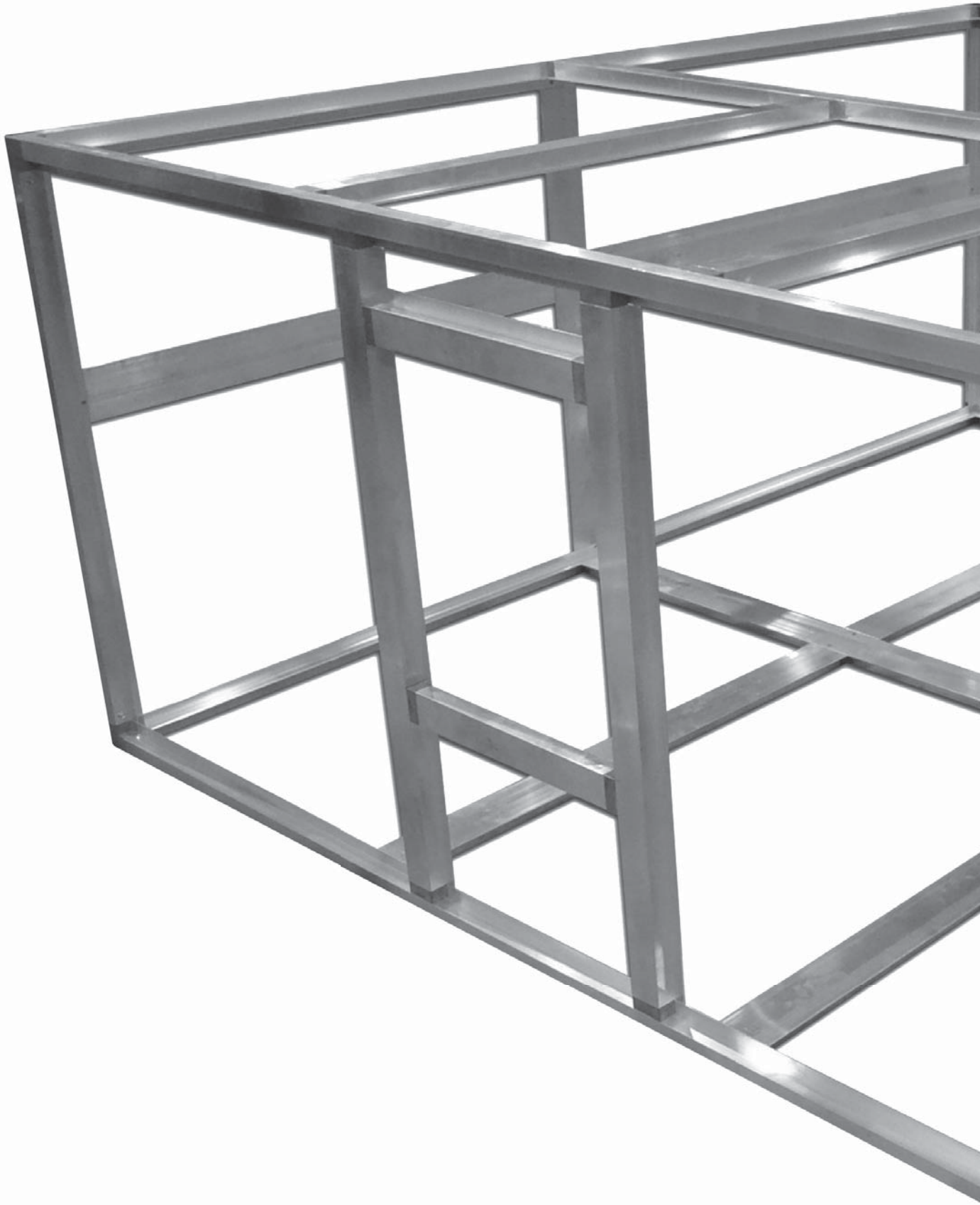
LOUVERS 50 AND 100 MM

Our **Louvers** feature all aluminum "L" shaped frame construction with blades fixed at a 40 or 45 degree angle. We have nominal 2" and 4" deep frames to choose from matched with blades designed with or without a drain channel. **AMCA Certified.**



FLEXIBLE CONNECTIONS

Our **Flexible Connections** feature an all aluminum frame joined by thermally welded PVC fabric. Frame flange height options include 30mm and 45mm with fabric widths of 2", 4" and 6" available for each size frame.



MODULAR FRAMING SYSTEMS, INC.
4525 Brittmoore Road, Houston, TX 77041 | T: 713.538.2050 | F: 713.538.2054